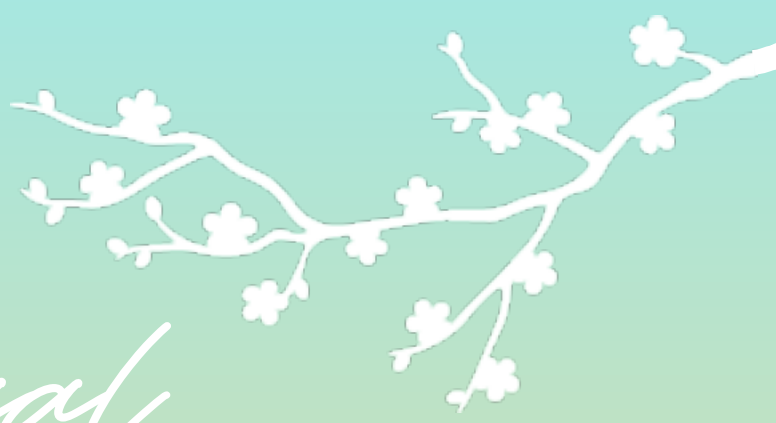


PAIA MANTOKUJI  
SOTO ZEN MISSION



*44<sup>th</sup> Annual*  
**BAZAAR**

*Local Faves & Baked Goods*  
SPAM MUSUBI, CHOW FUN, PICKLES,  
PRESERVES & VARIOUS BAKED GOODS

*Traditional Foods*  
NISHIME, OHAGI, MAZEGOHAN &  
SANBAIZUKE

*From the Garden*  
PLANTS, FLOWERS, VASES &  
PLASTIC POTS

*For the Home*  
CRAFTS, CLOTHES, SHOES, KITCHENWARE, SMALL  
APPLIANCES, FURNITURE, TOOLS & COLLECTIBLES

**SUNDAY**  
**MARCH 5TH**  
**8AM-12PM**

*We humbly ask  
for your support*

**\*MASKS REQUIRED IN THE HALL\***

**253 HANA HWY**  
ACROSS PAIA COMMUNITY CENTER

